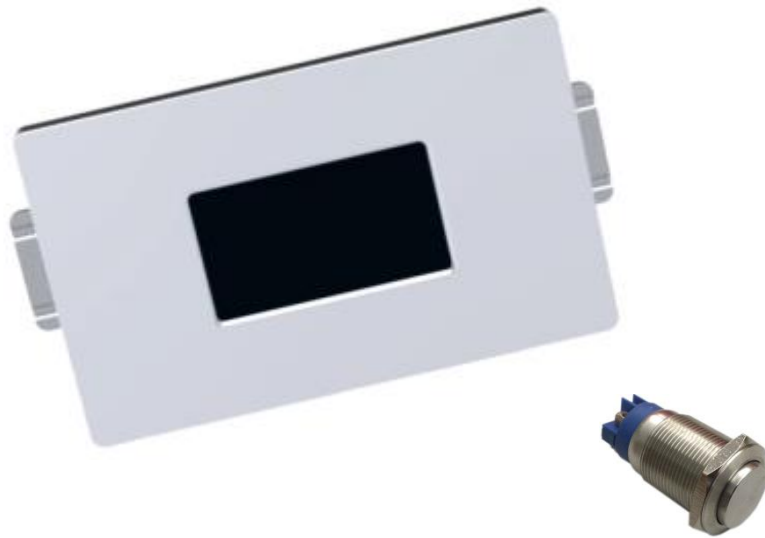


# Schmied

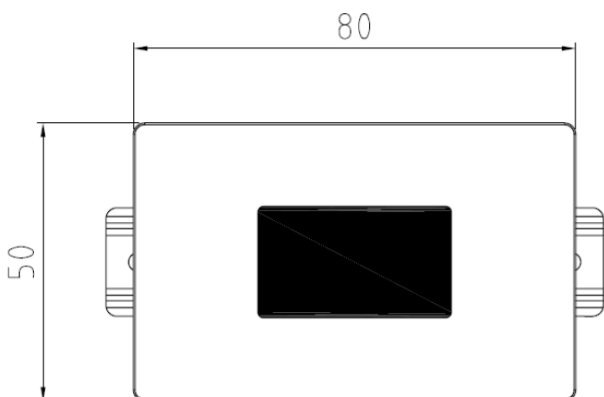


- Cost effective solution for individual urinal stalls, suitable for commercial and residential use.
- Touch-free hygienic operation
- Low energy consumption
- Simple, minimal design

## PRODUCT SPECIFICATIONS

Integrated Urinal Sensor (AC & DC)  
With Manual Override Button  
Dimension: 80mm x 50mm  
Material: Stainless Steel Face Plate

## TECHNICAL SPECIFICATIONS



*Unit in millimetres.*