

Schmied

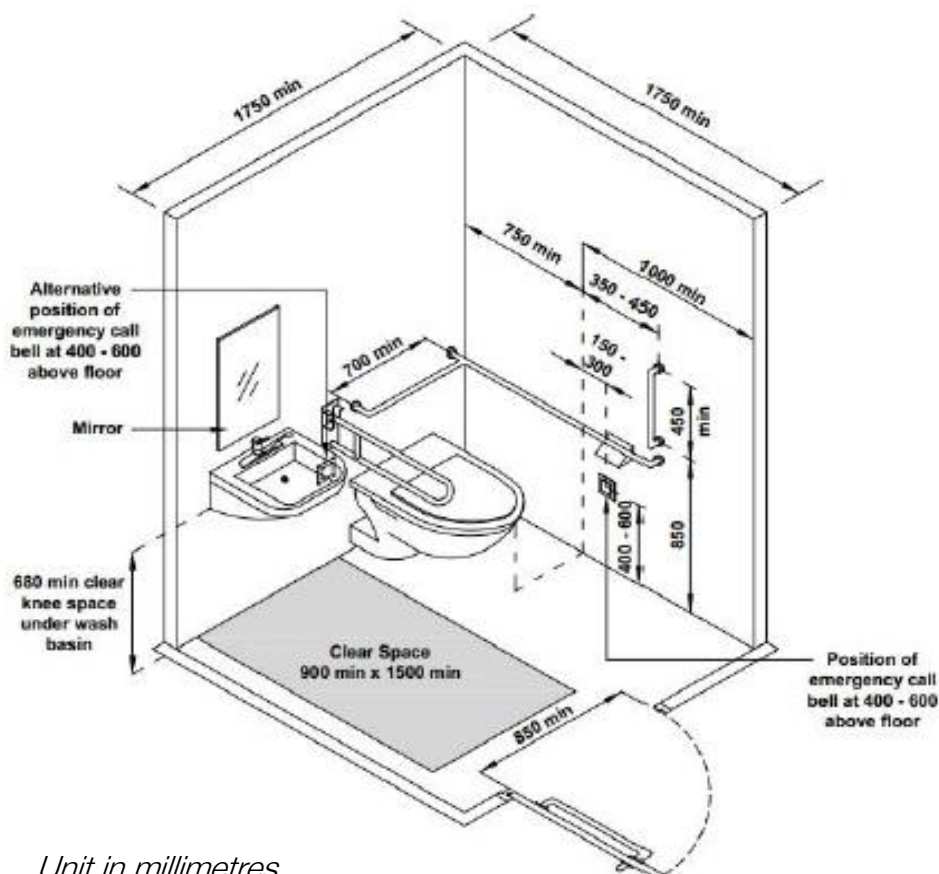


- All parts are made from 304 Stainless Steel. Diameter 38mm
- The tubing is a seamless construction, a structural unit for maximum strength.

PRODUCT SPECIFICATIONS

- 1 No Of flip up grab bar
- 1 No. Of L Bar
- 1 No Is 450mm Straight Bar
- 1 No Of 650mm Straight Bar

TECHNICAL SPECIFICATIONS



Unit in millimetres.